



"MEET OUR TEAM"



Kimberly Yep

Nutrition Services Worker at Chaparral Middle School. I've enjoyed working over 5 years with my co-workers preparing and providing meals to students. I enjoy serving our families through the Grab & Go program. Happily married for 27 wonderful years and mother to 4 amazing kids who have all attended WWUSD schools. I've been very involved in my kids' sports activities and recently become the photographer for the Boys Soccer Team. It's been a pleasure and a blessing to serve our families during this difficult time. Looking forward to kids returning to school.

Thank you to all the families that participated in the April 1st Spring Break - Food Drive & Meal Distribution Event at Diamond Bar HS & Walnut HS. It was a huge success.

RECIPE OF THE MONTH



Cheese & Cracker Chicks

<https://canadianfamily.ca/food/cute-snack-idea-cheese-and-cracker-chicks/>

- Ready in minutes
- Just 5 simple ingredients

DIRECT CERTIFICATION

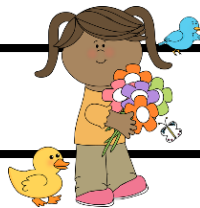
Direct certification (DC) is the federally mandated process that School Nutrition Program operators must use to certify children who are eligible for free meals or milk without completing an application. Charter schools, public school districts, and county offices of education may implement DC by using a local data match through their county's department of social or welfare services, and by using the California Department of Education's California Longitudinal Pupil Achievement Data System. Private schools, residential child care institutions, and nonpublic schools with day students may implement DC by using a local data match with their county's department of social or welfare services.

The DC process uses information provided by state or local agencies administering assistance programs and Other Source Categorically Eligible programs. Assistance programs include the Supplemental Nutrition Assistance Program (SNAP [known as CalFresh in California]), Temporary Assistance for Needy Families (TANF [known as CalWORKs in California]), and Food Distribution Program on Indian Reservations. Other Source Categorically Eligible programs include foster, migrant, homeless, runaway, and Head Start.

Student eligibility for free and reduced-price meals is determined by meal application or by DC. DC eliminates the need for paper applications. The DC matching process, whether automated or manual, requires no action by the household. Children from households with incomes at or below 130 percent of the federal poverty level are eligible for free school meals. Children from households with incomes between 130 and 185 percent of the federal poverty level are eligible for reduced-price meals.

As stated in Title 7, Code of Federal Regulations, Section 245.6(b), if a household submits a meal application for directly certified children, the DC eligibility determination will take precedence and the application must be disregarded. The application must be retained and the date of disregard must be documented.

<https://www.cde.ca.gov/ls/nu/sn/directcert.asp#:~:text=Medicaid%3A%20The%20student%20is%20eligible,Medi%2DCal%20in%20California>



SPRING



Free Grab & Go Meals!!!

Pick up free meals for any child 18 or younger at the school site closest to you.

Drive-through or walk-up curbside service available weekdays. Parents/guardians may pick up for all students at one location.

Service Hours:

Elementary Schools: 11:30 a.m. - 1:10 p.m.
Middle & High Schools: 7:30 a.m. - 9:00 a.m.